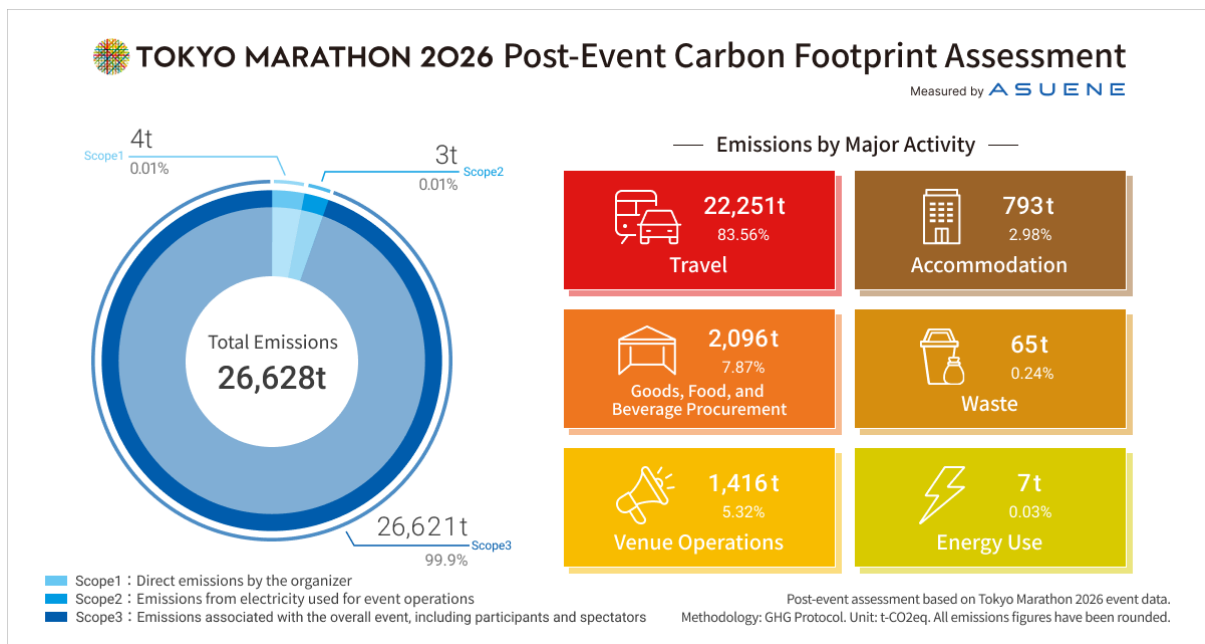


## Tokyo Marathon Foundation and ASUENE Reports Tokyo Marathon 2026 Carbon Footprint Advancing Toward a Carbon-Neutral Marathon by 2028

The Tokyo Marathon Foundation today announced the post-event carbon footprint of the Tokyo Marathon 2026, measured in collaboration with ASUENE Inc. after the March 1 race. The assessment found that total emissions were 26,628 t-CO<sub>2</sub>, a 2.3% increase compared with the pre-event estimate. This reflects the incorporation of actual data collected after the event and a more detailed assessment process, demonstrating improved data coverage and accuracy.

For the Tokyo Marathon 2026, ASUENE and the Tokyo Marathon Foundation provided a comprehensive view of the event's emissions profile. The assessment established a detailed understanding that will identify reduction opportunities from Tokyo Marathon 2027, the event's 20th edition, onward.

Based on the assessment results, ASUENE and the Tokyo Marathon Foundation will move forward with the development of an emissions reduction roadmap. Reduction actions will begin with the Tokyo Marathon 2027, with the goal of achieving carbon neutrality at the Tokyo Marathon 2028. ASUENE Inc. is a Sustainability Partner of Tokyo Marathon 2027.



## Post-Event Carbon Footprint Assessment

In the post-event assessment for the Tokyo Marathon 2026, actual GHG emissions associated with the event were calculated using various types of actual activity data. As a result, total Scope 1, 2, and 3 emissions were 26,628 t-CO<sub>2</sub>, representing a 2.3% increase from the pre-event estimate of 26,029 t-CO<sub>2</sub>.

For this assessment, actual data collected after the event was reflected, and the calculation scope was refined for areas including stakeholder travel, event-related merchandise, and participant travel. For participant travel, the methodology was refined to better reflect actual travel patterns by removing overlap with marathon participants and applying a more granular segmentation of domestic and international travel.

By expanding the data coverage in this way, ASUENE and the Tokyo Marathon Foundation were able to gain a more precise understanding of the emissions profile of Tokyo Marathon 2026.

### <GHG Emissions and Breakdown by Assessment Category>

Total emissions: 26,628 t-CO<sub>2</sub>.

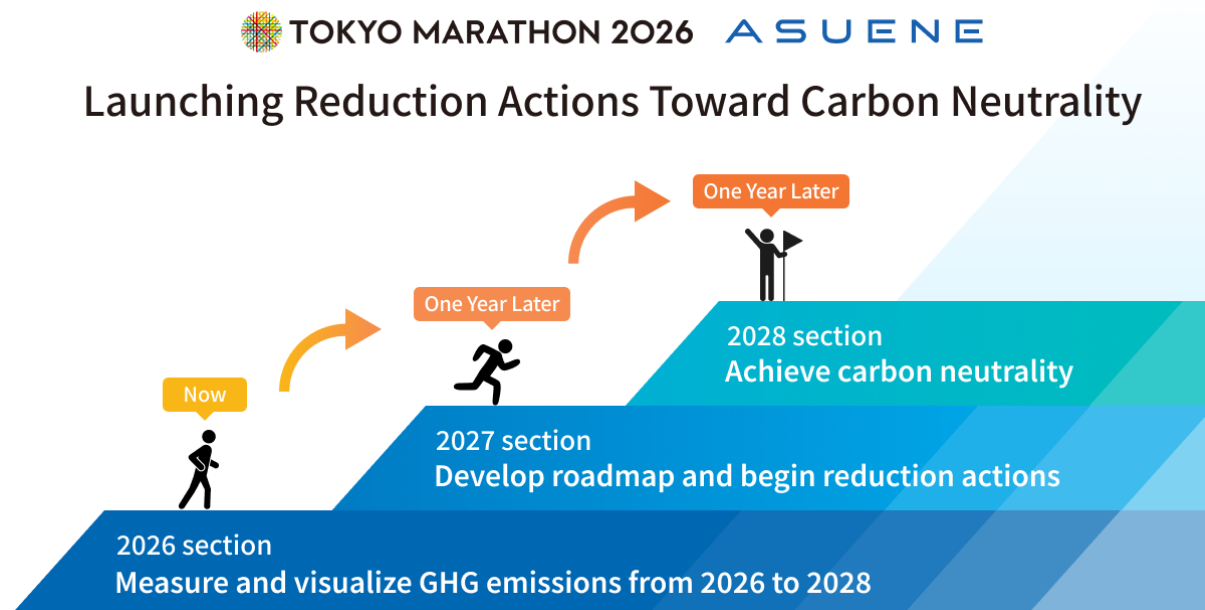
- Scope 1, direct emissions by the organizer: 4 t-CO<sub>2</sub>
- Scope 2, emissions from electricity used for event operations: 3 t-CO<sub>2</sub>
- Scope 3, emissions associated with the overall event, including participants and spectators: 26,621 t-CO<sub>2</sub>

The main breakdown is as follows.

- Travel by participants, spectators, and stakeholders: 22,251 t-CO<sub>2</sub>, 84% of total emissions, down 766 t-CO<sub>2</sub> from the pre-event estimate
- Accommodation for participants: 793 t-CO<sub>2</sub>, 3% of total emissions, up 7 t-CO<sub>2</sub>
- Procurement of goods, food, and beverages: 2,096 t-CO<sub>2</sub>, 8% of total emissions, up 361 t-CO<sub>2</sub>
- Waste, including cold-weather clothing and shoes: 65 t-CO<sub>2</sub>, 0.2% of total emissions, up 53 t-CO<sub>2</sub>
- Services related to venue setup and operations: 1,416 t-CO<sub>2</sub>, 5% of total emissions, up 940 t-CO<sub>2</sub>
- Energy use at venues and related facilities: 7 t-CO<sub>2</sub>, 0.03% of total emissions, up 3 t-CO<sub>2</sub>

Note: All emissions figures have been rounded.

## Reduction Actions to Begin at the Tokyo Marathon 2027 Toward Carbon Neutrality at the Tokyo Marathon 2028



For the Tokyo Marathon 2026, ASUENE and the Tokyo Marathon Foundation assessed GHG emissions across Scope 1, 2, and 3, visualized the overall emissions profile of the event, and established foundational data to support the development of reduction measures from the Tokyo Marathon 2027 onward.

At the Tokyo Marathon 2027, reduction actions will begin based on this data. ASUENE and the Tokyo Marathon Foundation will jointly develop an emissions reduction roadmap, aiming to achieve carbon neutrality at the Tokyo Marathon 2028.

The Tokyo Marathon 2027 will mark the event's milestone 20th edition. By launching reduction actions from this milestone event, ASUENE and the Tokyo Marathon Foundation will put concrete initiatives in motion toward the Tokyo Marathon 2028.

### **Making Carbon Emissions Personal Through the Tokyo Marathon**

Tokyo Marathon is one of the world's largest international marathon events, bringing together runners from Japan and around the world, as well as volunteers, spectators, sponsors, and local communities. The GHG emissions associated with the event are connected not only to venue operations, but also to everyday behaviors such as travel, purchasing, eating and drinking, and waste disposal.

In this post-event assessment, travel by participants, spectators, and stakeholders accounted for 84% of total emissions. At the same time, running itself is a human-powered form of mobility with a relatively low environmental impact. Through Tokyo Marathon, ASUENE and the Tokyo Marathon Foundation will accurately visualize and communicate both the positive value created by running, including health, connection, and urban vibrancy, and the potential for reducing GHG emissions through changes in transportation choices and daily actions.

Running is a sport that is particularly vulnerable to the impacts of global warming, including rising temperatures and extreme weather events. For this reason, it is important to first accurately understand the GHG emissions associated with the event and use the results as a basis for the next set of actions.

ASUENE and the Tokyo Marathon Foundation will develop an emissions reduction roadmap toward the Tokyo Marathon 2027. Through the Tokyo Marathon EXPO and RUN CYCLE SQUARE, the two organizations will promote greater public engagement with carbon emissions.

### **ASUENE Company Profile**

ASUENE Inc. is a Sustainability AI Company in Japan with the mission of "Changing the world for the next generation". We provide "ASUENE", the world's leading carbon accounting platform for GHG measurement, reduction, and reporting powered by advanced AI, and we contribute to the net zero society.

Company name: ASUENE Inc.

Representative: Founder CEO Kohei Nishiwada

Date of establishment: October, 2019

Headquarters: WeWork, KDX Toranomom 1Chome Building 4F, 1-10-5 Toranomom, Minato-Ku

URL: <https://corp.asuene.com/en>